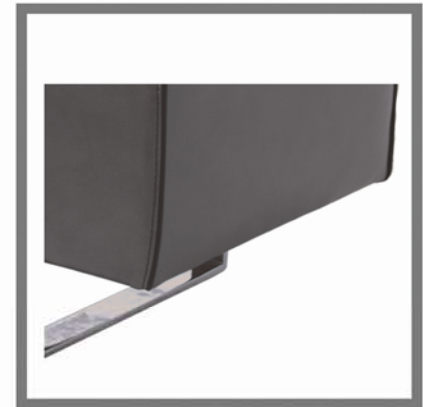
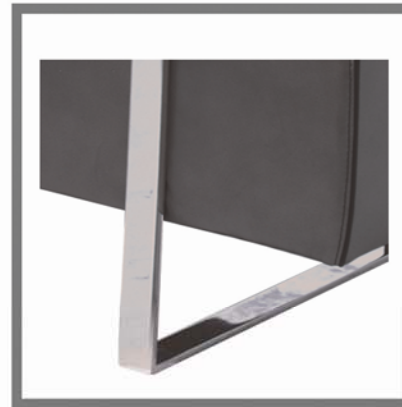
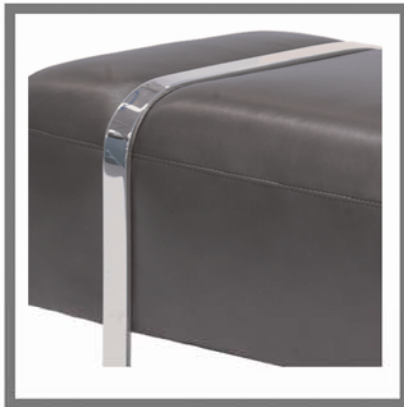


The Bing Ottoman



As shown: OA Bench Ottoman
Leather: Galaxy
Color: Silver.
100% top grain cowhide

Spring system: Tempered steel 8 gauge zig zag springs.

Back: N/A

Seat: High resiliency solid foam wrapped in polyester fiber.

Base: Chrome Metal.

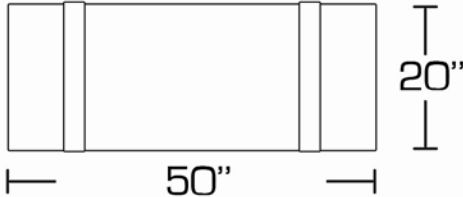
Frame: Combination of Hardwood/Plywood frame - corner blocked, glued & stapled

Notes:

The Bing Collection

SKU	Product
OA	Bench ottoman

OA Bench Ottoman
(Top view)



OA Bench Ottoman
(Front view)

