

# WINNERS ONLY INC.

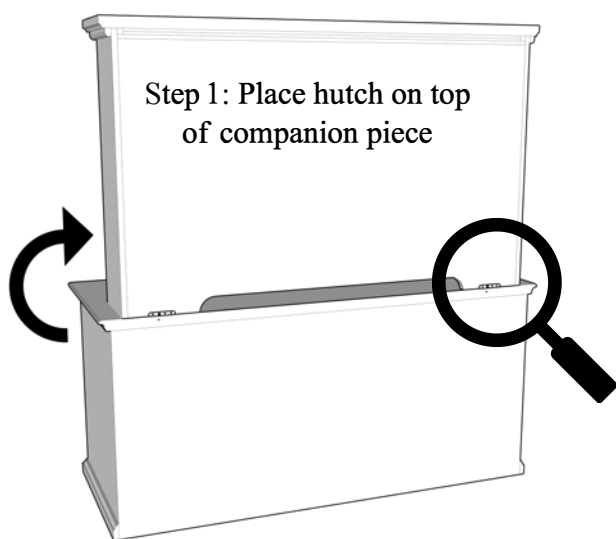
## Hutch Assembly Instructions

**Exposed staple tips can cause injury.** For your protection, please remove any exposed staples used in packaging.

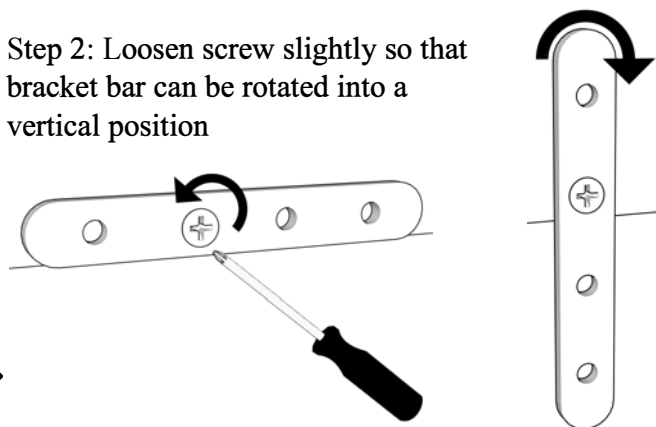
We recommend having two people assemble this product, especially for Step 1. Two people will make assembly easier, help prevent damage, and help prevent injuries.

Carefully check all packing materials for any small parts that may have come loose during shipment

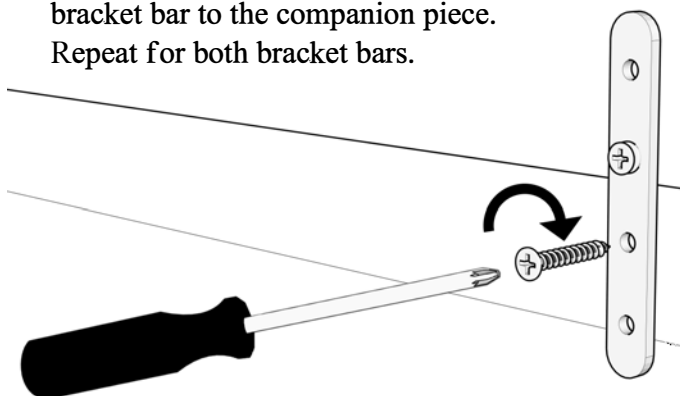
Store all parts on a non-abrasive surface prior to assembly to prevent damage or scratches



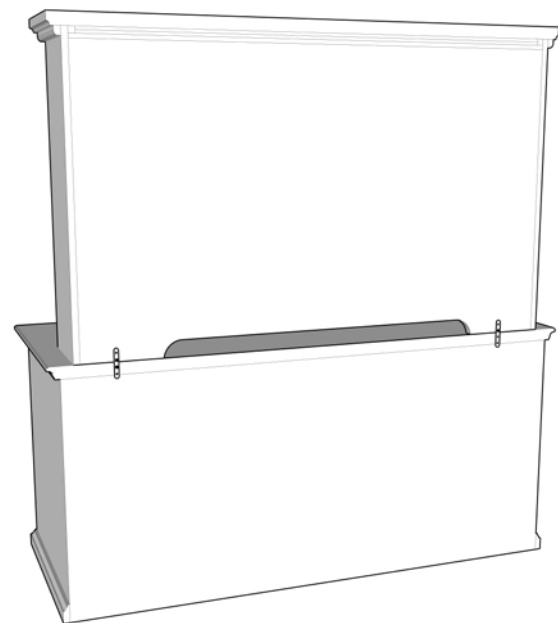
Step 2: Loosen screw slightly so that bracket bar can be rotated into a vertical position



Step 3: Attach screw through the bracket bar to the companion piece. Repeat for both bracket bars.



Step 4: Tighten all bracket bar screws. Do not over-tighten screws!



Completed assembly.  
Thank you for purchasing this product!