

PALECEK

601 PARR BOULEVARD, RICHMOND, CA

CAMILLA FOSSILIZED CLAM DINING TABLE - ASSEMBLY INSTRUCTIONS

These instructions are provided for your convenience. It is very important that they are read carefully and completely before starting the assembly process. To avoid injury, three (3) or more persons are recommended to assemble this item.



INCLUDED IN BOX

2 BOXES: 1 Table Top



1 Table Base



1 Hardware packet: 28 screws

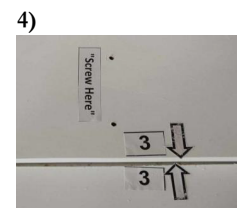


TOOLS NEEDED:

1. Phillips Head Screw Driver (not included).

TO ASSEMBLE:

- 1). Unpack and open the top and base units. We suggest placing a soft, non-scratching cloth, on the floor and then place the table top in the upside-down position.
- 2). Place the base unit in the upside down position within the recess on the underside of **Table Top as shown below**. Ensure the mounting holes are aligned with the numerical mark locators.
- 3). Insert screw within the pre-drilled holes, attaching the base to the top. As a guide, please refer to the mark locators "screw here". There are two (2) holes for each marked location. Repeat for the remaining twentyseven (27) screws.
- 4). Carefully place the fully assembled dining table at desired location in an upright position.
- 5). For uneven floors, use the built-in adjustable levelers to level the table by rotating until they make contact with floor surface.
- 6). Assembly complete.



CARE:

Wipe up spills immediately. Dust with a soft dry cloth. Use dampened cloth in mild soapy water to clean. Dry with soft dry cloth. Do not use cleaning solutions or abrasives.

T.800.274.7730 | F.510.234.7234

PALECEK.COM