

PALECEK®

601 PARR BOULEVARD | RICHMOND | CA 94801

MOUNTING INSTRUCTIONS Zola Rattan Wall Décor – Whitewash 188103

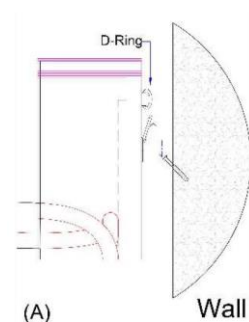
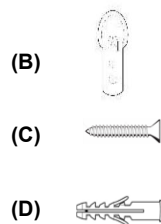


These instructions are provided for your convenience. It is very important that they are read carefully and completely before beginning installation of this item.

Tools Needed: Drill, Phillips head screw bit, Measuring tape, Hammer, Bubble Level and Pencil

Parts List:

- A) Wall Decor x 1 pc.
- B) D-Ring x 4 pcs.
- C) Wall Screw x 2 pcs
- D) Wall Anchor x 2 pcs

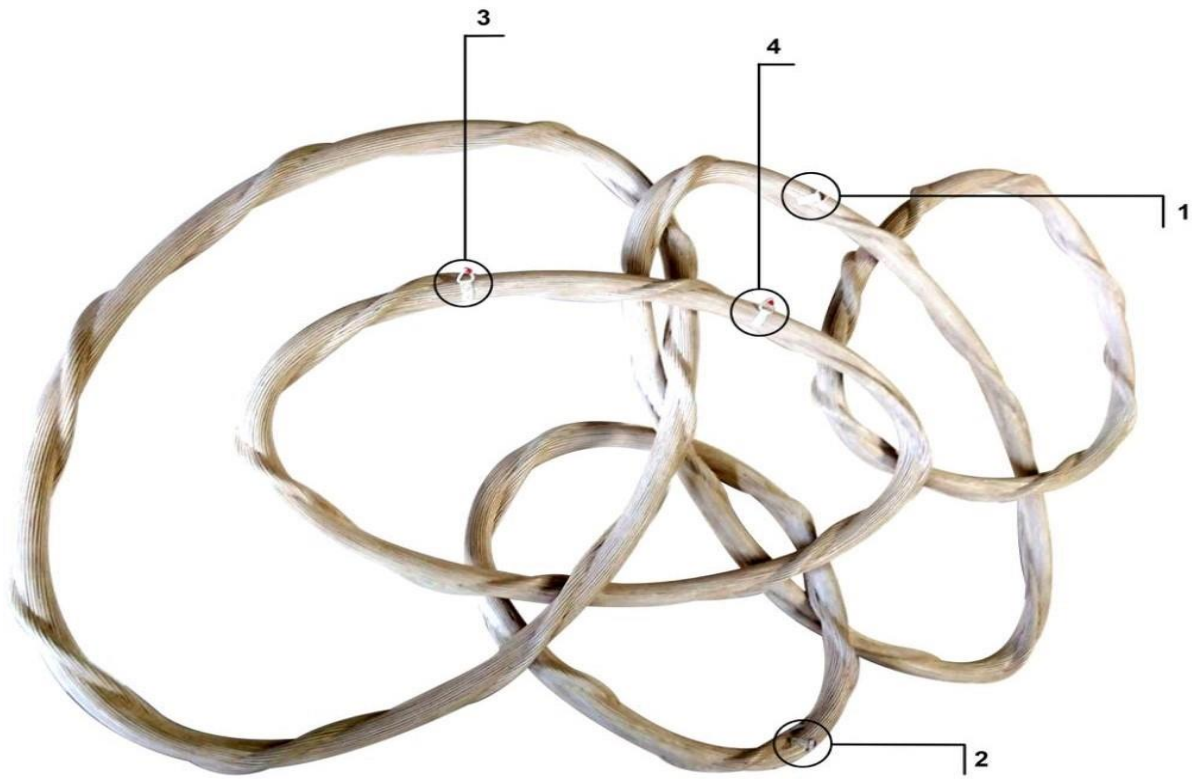


(A) Side View of cleat engagement

To Assemble:

1. Remove all parts and hardware from the box along with any plastic protective packaging. Do not discard contents until after assembly is complete to avoid accidentally discarding small parts or hardware.
2. Place components on a non-scratching surface.
3. Determine the desired location of the Wall Décor. Wall Décor is equipped with four (4) D-rings for hanging.
4. Using the Wall Screws, position the screw on wall in desired location and mark the hole locations on the wall with pencil.
5. Use bubble level to ensure level positioning.
6. Using the drill, pre-drill holes at marked locations in 45° angle.
NOTE: If Wall Decor location will be installed in sheet rock or masonry, use appropriate drill bit size to accommodate wall anchors at locations between wall studs. Using a hammer, gently tap anchors into the holes until they are flush with the wall. Anchors provided are for sheetrock. For masonry anchors, consult your local hardware store.
7. Place Wall Anchors on hole locations and insert screws accordingly.
8. Do not bore the screw all the way through.
9. Lift the Wall Decor, align the D-rings and Screws, then slide downwards firmly until they engage.
10. Installation is complete.

Care Instructions: Dust with a soft, dry cloth. Do not use abrasive cleaners.



BACK VIEW OF ZOLA WALL DECOR
WITH POSITION OF D - RINGS

FOR VERTICAL HANGING
USE D- RINGS NO. 1 & 2

FOR HORIZONTAL HANGING
USE D- RINGS NO. 3 & 4