

# PALECEK®

601 PARR BOULEVARD | RICHMOND | CA 94801

## MOUNTING INSTRUCTIONS

### WESLEY MIRROR

150479

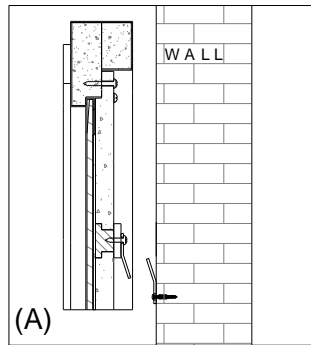
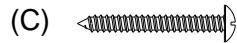
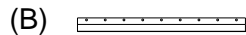


These instructions are provided for your convenience. It is very important that they are read carefully and completely before beginning installation of this item.

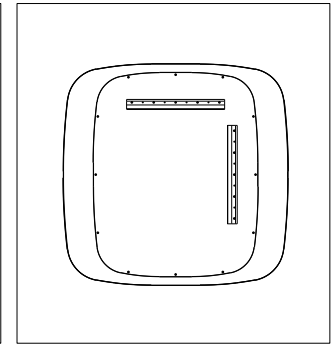
**Tools Needed** : Drill, Phillips head screw bit, Measuring tape, Hammer, Bubble Level, Pencil

### Parts List:

- A) Wall Mirror x 1 pc
- B) Aluminum Cleat x 1 pc
- C) Wall Screws x 5 pcs
- D) Wall Anchors x 5 pcs



(A) Side view of cleat engagement



Back view of Wall Decor

### To Assemble:

1. Remove all parts and hardware from the box along with any plastic protective packaging. Do not discard contents until after assembly is complete to avoid accidentally discarding small parts or hardware.
2. Place components on a non-scratching surface.
3. Determine the desired location of the frame. Frame is equipped with Male Cleats on 2 sides for vertical or horizontal hanging.
4. Using the Female Aluminum Cleat, position cleat on wall in desired location and mark the hole locations on the wall with pencil.  
NOTE: It is strongly recommended to install cleat with screws attaching directly into wall studs.
5. Use bubble level to ensure level positioning.
6. Using the drill, pre-drill holes at marked locations.  
NOTE: If frame location will be installed in sheet rock or masonry, use appropriate drill bit size to accommodate wall anchors at locations between wall studs. Using a hammer, gently tap anchors into the holes until they are flush with the wall. Anchors provided are for sheetrock. For masonry anchors, consult your local hardware store.
7. Place Female Aluminum Cleat over hole locations and insert screws accordingly.
8. Tighten screws firmly. Do not overtighten.
9. Lift the frame, align the Male and Female Aluminum Cleats, then slide downwards firmly until cleats engage.
10. Installation is complete.

**Care Instructions:** Dust with a soft, dry cloth. Do not use abrasive cleaners