

# PALECEK®

601 PARR BOULEVARD | RICHMOND | CA 94801

## MOUNTING INSTRUCTIONS

### Dover Outdoor Wall Décor - Medium 145905

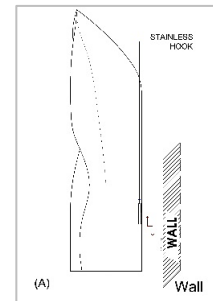
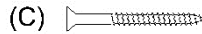
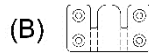


These instructions are provided for your convenience. It is very important that they are read carefully and completely before beginning installation of this item.

**Tools Needed:** Drill, Philip head screw bit, Measuring tape, Hammer, Bubble Level, and Pencil

#### Parts List:

- A) Wall Decor x 1pc.
- B) Metal Cleat x 2pcs.
- C) Wall Screw x 4pcs.
- D) Wall Anchor x 4pcs.

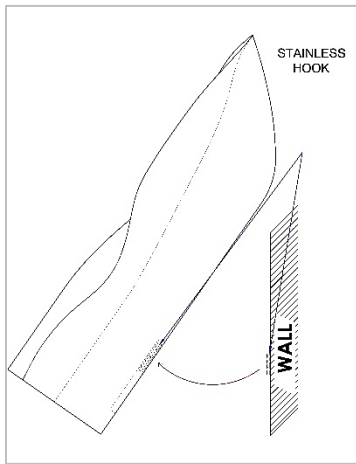


Side View of cleat engagement

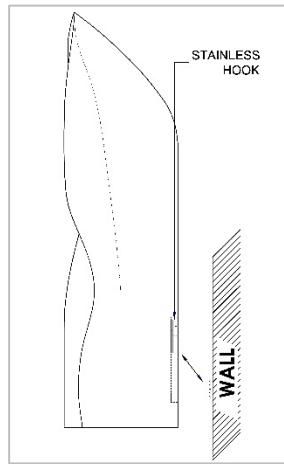
#### To Assemble

1. Remove all parts and hardware from the box along with any plastic protective packaging. Do not discard contents until after assembly is complete to avoid accidentally discarding small parts or hardware.
2. Place components on a non-scratching surface.
3. Determine the desired orientation of the Wall Decor. Wall Decor is equipped with two (2) Metal Cleats, enabling it to be mounted in two opposite orientations.  
NOTE: Make sure the place where the Wall Decor will be attached is leveled before attaching the metal hooks.
4. Using a pencil, mark the desired position on the wall where the Metal Cleats will be placed.
5. Install the metal cleat at the marked position with a wall screw and anchor, ensuring it is securely fastened to the wall.  
NOTE: If Wall Decor location will be installed in sheet rock or masonry, use appropriate drill bit size to accommodate wall anchors at locations between wall studs. Using a hammer, gently tap anchors into the holes until they are flush with the wall. Anchors provided are for sheet rock. For masonry anchors, consult your local hardware store.

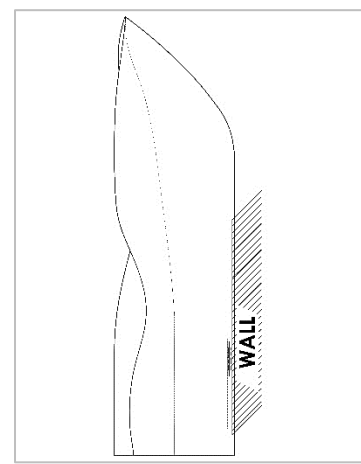
6. Lift the Wall Decor and align the Metal Cleats, then slide downwards firmly until they engage.



**STEP 1:**  
Rotate the Wall Decor to determine  
The right position.



**STEP 2:**  
If the position is determined,  
slowly rotate back the Wall Decor  
into the wall.



**STEP 3:**  
Slide downwards until they engaged.

7. Installation is complete.

**Care Instruction:** Wipe with a soft dry cloth. Do not use abrasive cleaners.