



BRAMBLE

PRODUCT TEARSHEET



Edwardian Bookcase

Shown in: **DRW**

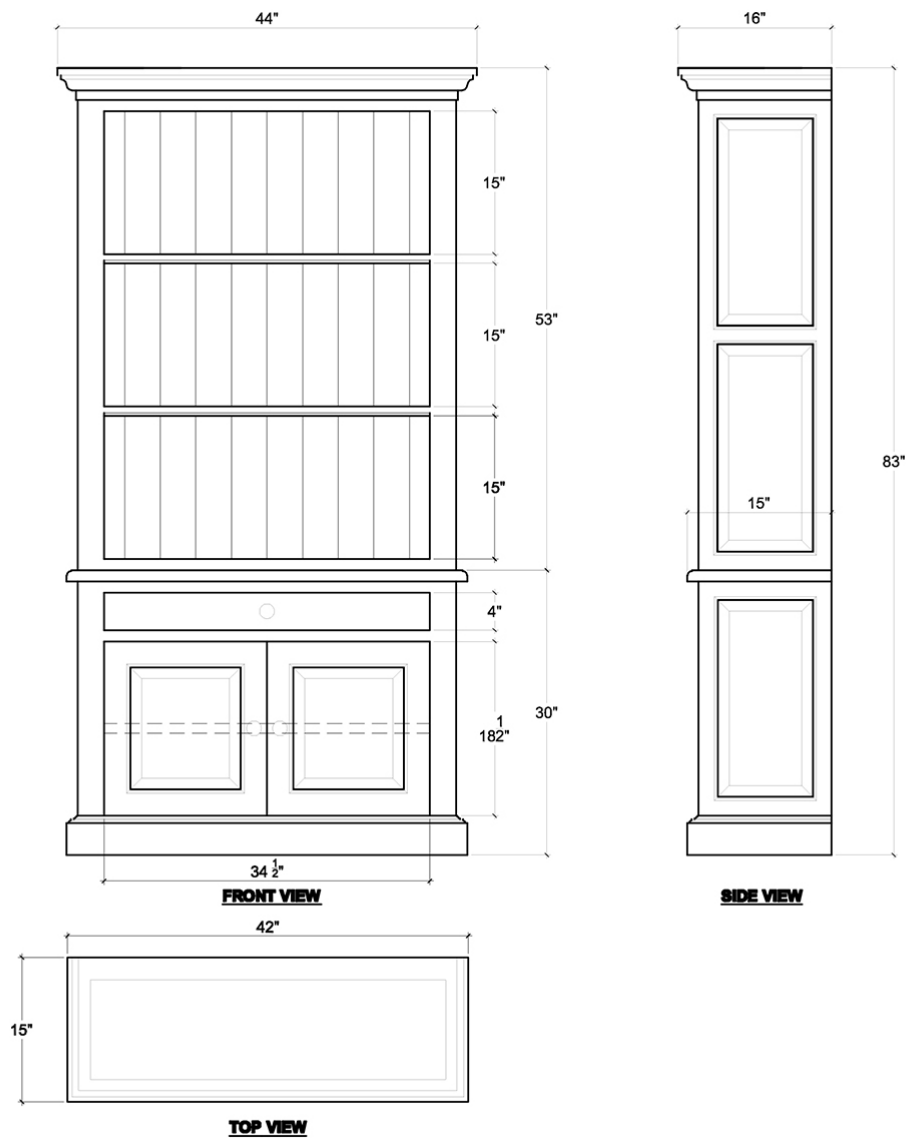
SKU: **25642**

Size: **44W x 16D x 83H in**



Overview

Ripe with classic details, the Edwardian Bookcase is a fabulous focal point for a wall in the library or living room. This traditional design boasts mahogany construction with dovetail drawers, while offering both open shelving and a lower cabinet for easy display and storage. This piece is offered with a vast array of finish and distress options to create a truly custom design.



Visual Highlights

Technical Specification

Dimensions	44W x 16D x 83H in	CBM	1.1275725
Number of Packages	2	Cubic Feet	39.82 ft³
Package 1 Dimensions	47.2 x 19.3 x 58.3 in	Package 1 Weight	110.01 lbs
Package 2 Dimensions	45.3 x 18.3 x 35.4 in	Package 2 Weight	60.85 lbs
Package Weight Total	170.86 lbs	Net Weight	152.12 lbs
Material	Mahogany		

<https://www.brambleco.com/25642>
